



# Guidebook for Penallt and the area

## Food Scene



### The Whitebrook

31 locals recommend

Excellent "foodie" restaurant with Michelin star



### The Walnut Tree

81 locals recommend

Excellent restaurant near Abergavenny



## Severn & Wye Smokery

32 locals recommend

Fabulous fish shop and deli with lovely restaurant and cafe. They smoke their own fish and meats



## Stonemill Restaurant

B4233

22 locals recommend

Good restaurant close to Monmouth

## Shopping



## Waitrose & Partners

110-114 Monnow St

26 locals recommend

Good Supermarket



## Lidl

Redbrook Road

18 locals recommend

Cheaper Supermarket



## Co-op Food - Rockfield Road - Monmouth

Rockfield Road

New local Coop



## M&S Monmouth Simply Food

66-68 Monnow St

11 locals recommend

Good for food and wine





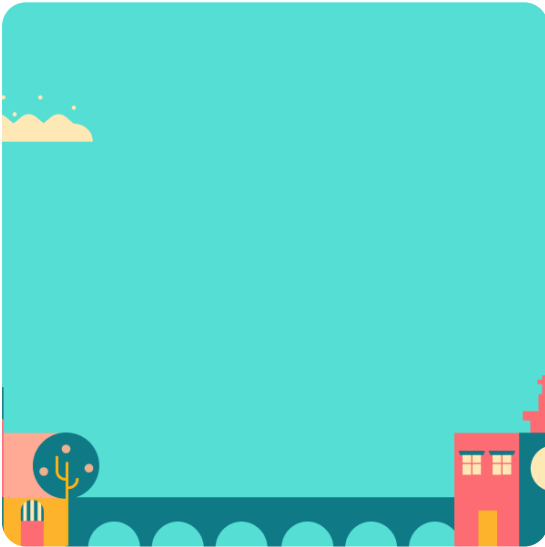
## Le Gourmet

9 Church Street

Good butcher's shop

---

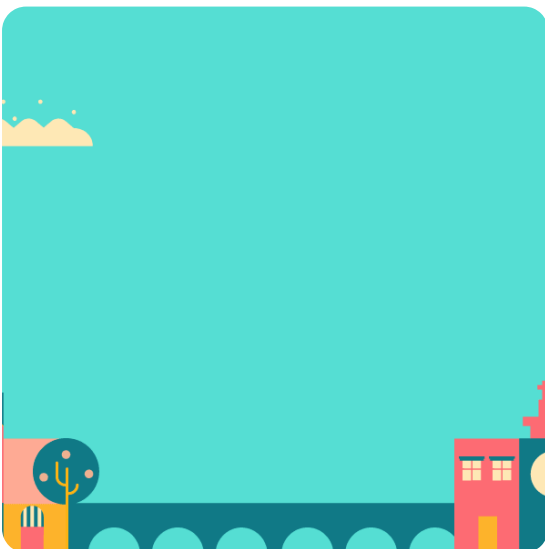
## Sightseeing



### Monmouth

152 locals recommend

Nice market town



### Abergavenny

145 locals recommend

An interesting town to visit under close to Sugar Loaf Mountain.





## Brecon Beacons

Beacons Park

279 locals recommend

Fabulous scenery and great walking trails.



## Monmouthshire and Brecon Canal

67 locals recommend

Old canal running from Ponypool to Brecon amidst stunning mountain scenery. Walk or cycle along the towpath or rent a canal boat.



## Brecon

108 locals recommend

Stunning cathedral, interesting castle, lovely canal basin and great theatre

## Local pub



### The Boat Inn

Lone Lane

40 locals recommend

Characterful pub with lovely outdoor garden by the river Wye



### Lion Inn Trellech

Church Street

13 locals recommend

Pub in the next village approx 3 miles away



### The Pig & Apple

9 locals recommend

Local eatery in Penallt part of Humble by Nature



## The Cripple Creek Inn

Abergavenny Road

9 locals recommend

Local eatery and pub



## The Inn at Penallt

15 locals recommend

Local pub with nice garden now called The Bush Inn

## Neighborhoods



## Hay-on-Wye

286 locals recommend

Interesting town to visit especially if you take the back road from Llanvihangel Crucorney via Llanthony Priory. Stunning views from the top of Hay Bluff.





## Forest of Dean District

29 locals recommend

Websites to visit

<http://www.wyedeantourism.co.uk/discover/thingstodo>

<https://www.wyevalleyaonb.org.uk/>

<https://www.royalforestofdean.info/wye-valley/>

<https://www.visitwales.com/must-do-wye-valley-and-vale-usk>

## My favourite spots



### Penallt Old Church

Beautiful 12th century church just below the property. Check out the unusual roof bosses and the absolutely stunning views from the churchyard



### Capel y Ffin Monastery

This is half way up the back road to Hay on Wye just past Llanthony Priory. Dramatic views and a great experience.



## The Kymin

24 locals recommend

Lovely spot on the way to the Forest of Dean. You can park there and walk along Offa's Dyke Path and see Penallt from across the valley



## Forest of Dean

High Street

152 locals recommend

The oldest forest in the UK just across the valley. Masses of great walks and beautiful scenery



## Sugar Loaf

94 locals recommend

Wonderful view from the top of this iconic hill just outside Abergavenny. A steep climb so be prepared!





## Llanthony Abbey

Llanvihangel Crucorney

37 locals recommend

One of the most atmospheric spots on the back road to Hay on Wye. I love this place and always take visitors there and on up to Hay Bluff with a 360 degree view of three counties.



## Tintern Abbey / Abaty Tyndryn

167 locals recommend

Beautiful Cistercian Abbey right on the banks of the river Wye



## White Castle Vineyard

13 locals recommend

Award winning family run vineyard next to White Castle. Great wine and friendly people. Wine tastings.